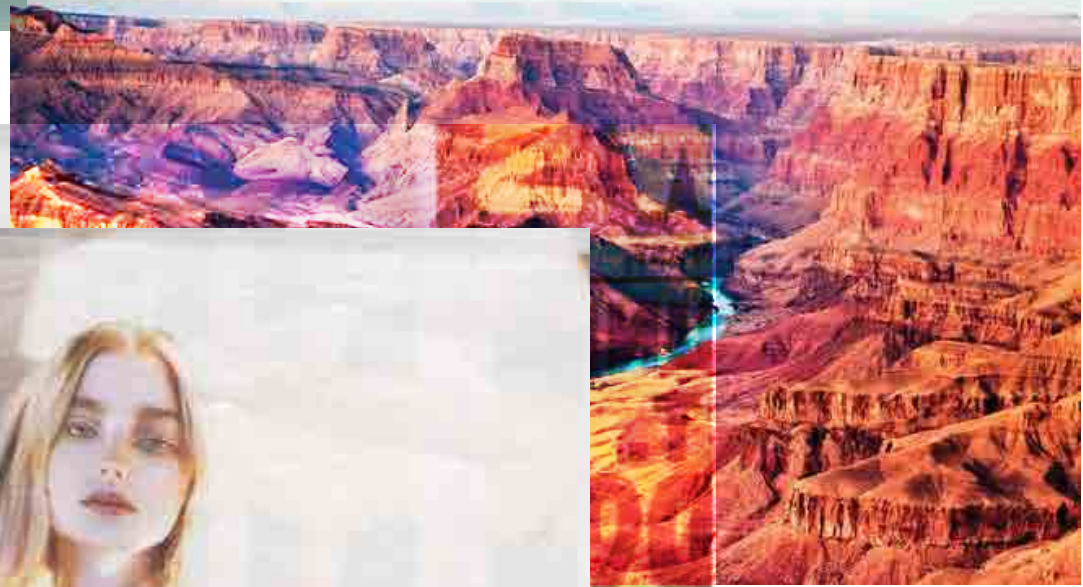


ARTISANAL FALL 2017

By Laurel Moore



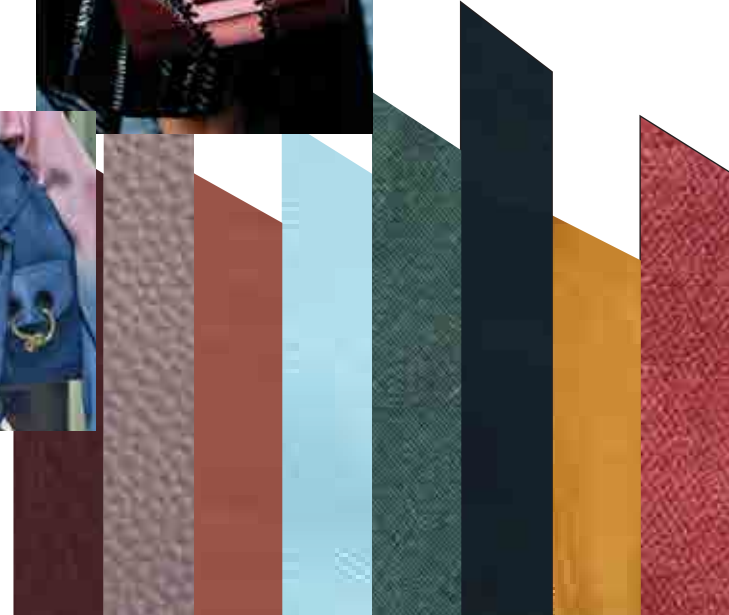
ARTISANAL FALL 2017

Artisanal Fall 17/18

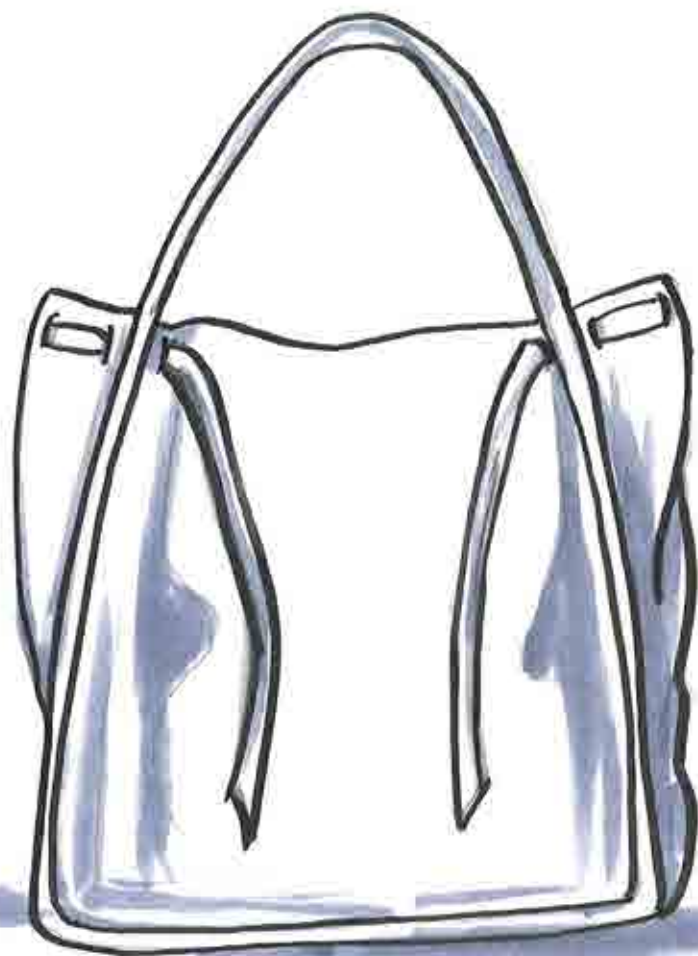
- A colorful play on a fall palette
- Inspired by western travels and works of artisans along the way
- 3D applique
- Soft velvets and suedes and buttery leather options
- Western details (such as saddle inspired leather cuts and leather weaves)
- Whip stitch details act as a trim
- Braids and knots are used as applique
- The Knot is an update to tassels this season
- All bags are unlined and has artisan hand feel

Key Colors

- Maroon
- Rosewood
- Potters clay
- Brittle Yellow
- Dusty Mauve
- Clay Brown







- 0.75" magnetic snap silver
- 10% zipper silver FOR interior pocket

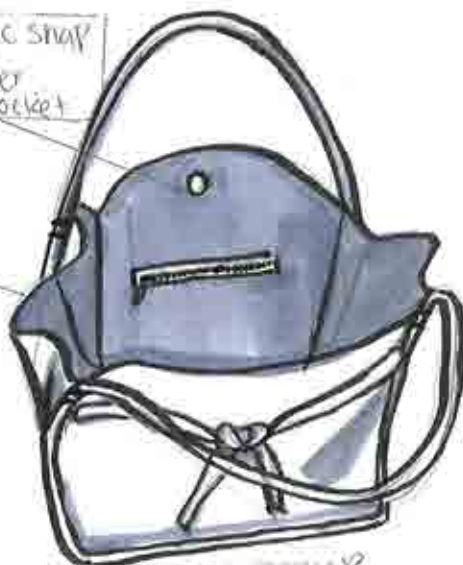
- unlined interior
- DTM edge paint
- DTM stitches

0.75" Magnetic Snap



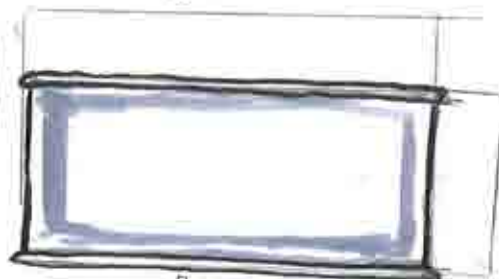
1.5" ZIPPER Pull

1/4" W



TOP/INTERIOR

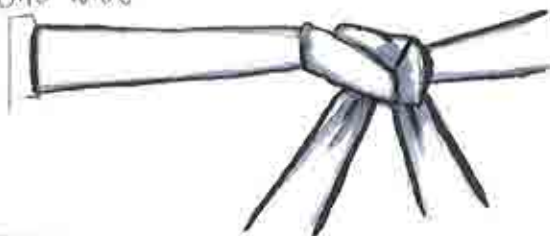
13"



BOTTOM

LEATHER DRAWSTRING = 55" LONG

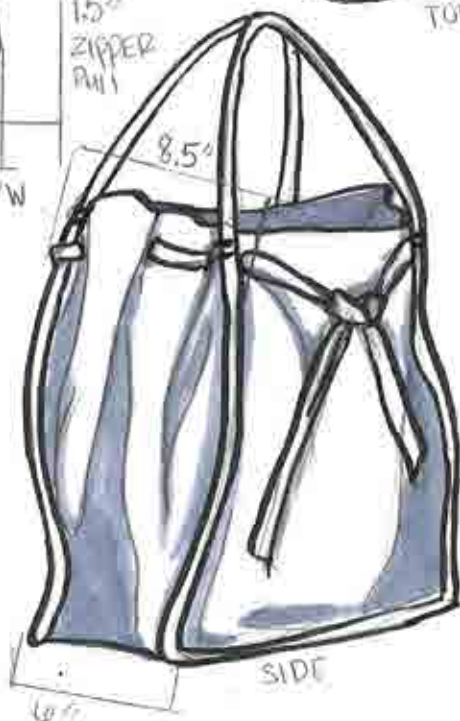
0.75" WIDE



- Handles are 20" long
- same width as piping
- connects to piping on body

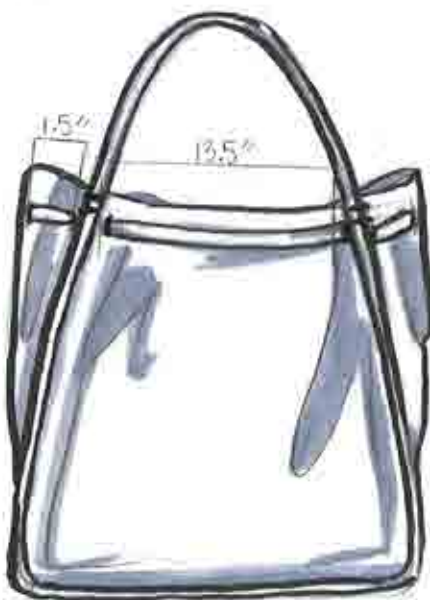
11" DROP

DOUBLE BACK TACK



SIDE

8.5"



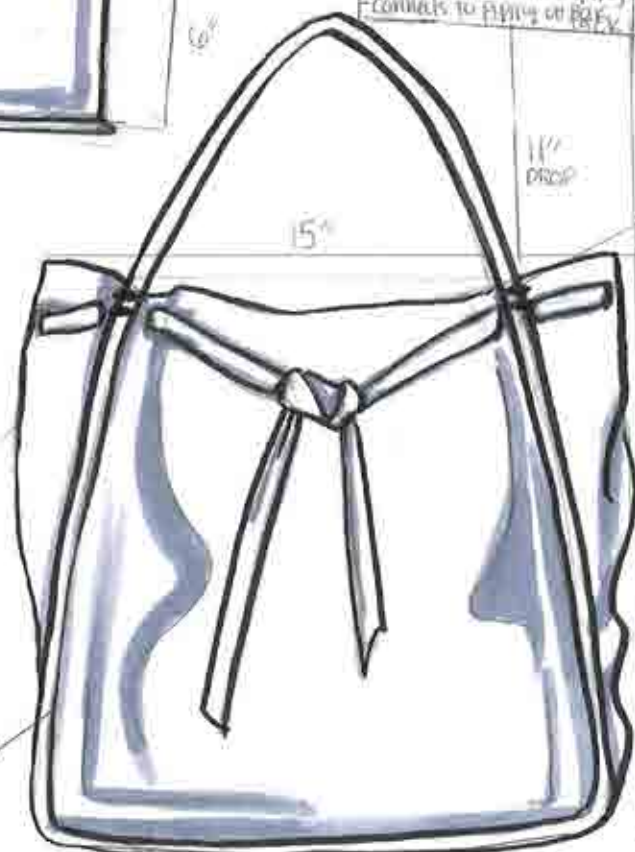
BACK

1.5"

13.5"

15"

13"



13" FRONT

PIPING IS 0.515"



10.75" W X 10" H X 5" D

CROSSBODY STRAP

HARDWARE

1 1/4" x 2



SQUARE RING

2" WIDE X 3"



1 1/4" x 1

10.75



BOTTOM



inside

5.0"



GUIDE
FOR STRAP

KNOW THE BAG

2"

10.75"
8.75"

- DETACHABLE
- INTERIOR LINED
- MATTE DTM edge paint
- STRAPS NO TOP FLAPS

ADJUSTABLE STRAP

19" - 21" / 48cm

8.75"



8.75" 10"

- STRAP 1 1/2" - 2 ROW TACKS

HARDWARE

4.515" FROM SC

FRONT - 1/4" FROM BOTTOM IN LF

- WHIP STITCH (every 3.75" - 3")
- NO GROMMETS SIDE JUST HOLE PUNCH



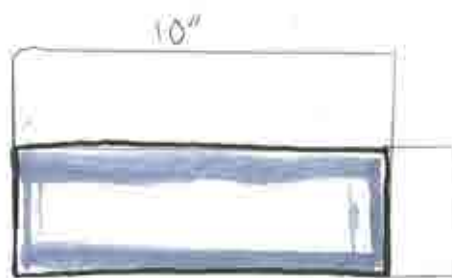
10.75"
8.75"



Back Pocket



7" H X 10" W X 3" D



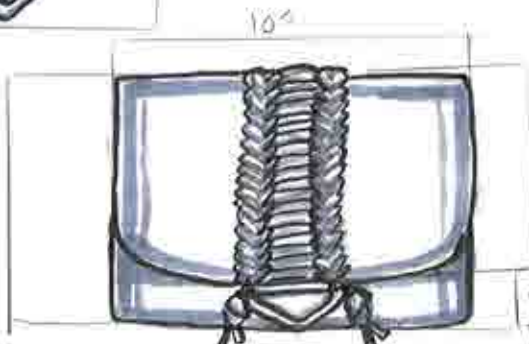
Bottom



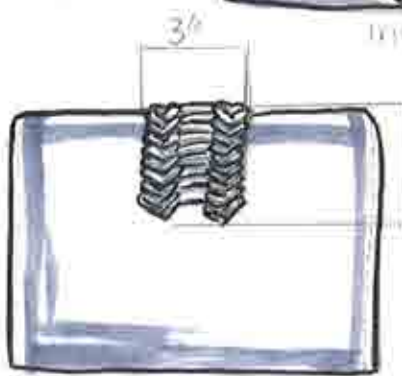
Side 2"

1 1/4"

- Hardware is CF
- 1/4" from bottom
- 8" from side panel



Front



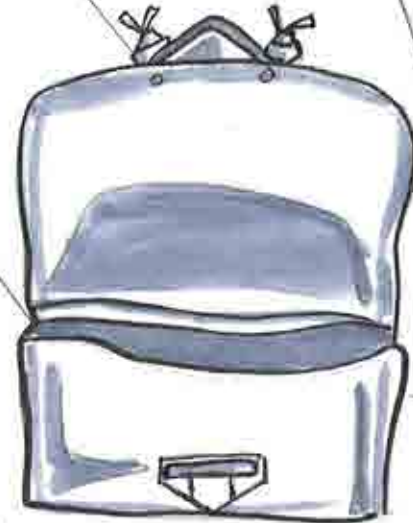
Back



Side 3 1/4"

Top hardware piece @ CF

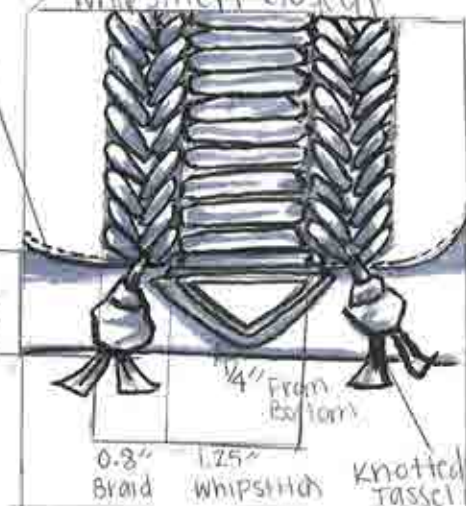
unlined interior



Interior

stitching is DTM 1cm from edge

- Front Flap closure
- Push lock closure
- Side gussets
- Knotted leather design detail
- Braided Applique
- 2x 1.5" knots w/ 1" extra length
- Whipstitch closure



clutch